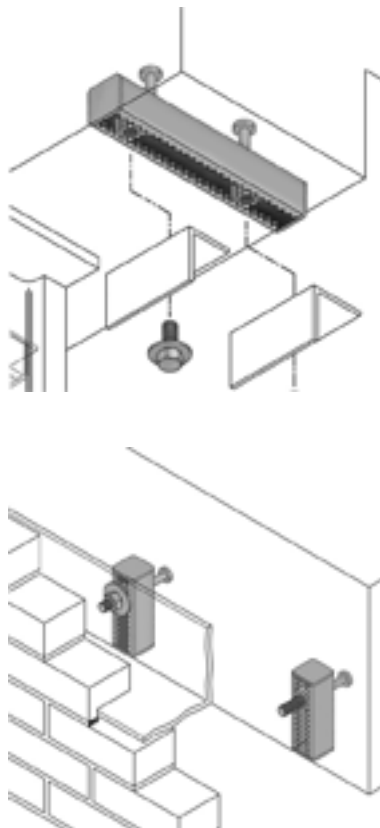
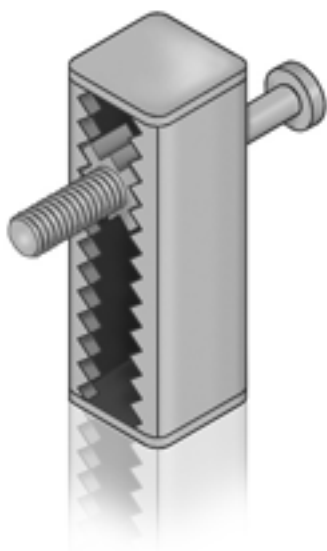


Concrete Inserts

Sharktooth Insert



DRAWINGS FOR ILLUSTRATIVE PURPOSES ONLY

Sharktooth Insert

The Sharktooth Insert has various applications and is capable of developing working loads up to 8,000#/ft. in both shear and tension. It is adjustable along virtually its entire length, and also allows in and out adjustment, while still resisting shear and tension loads. It is fabricated in lengths from 3" to 12'-0" long, and can be custom designed for project-specific applications, such as radiuses or specific lengths.

- Serrated shark-tooth design allows insert to resist high vertical shear loads (eliminates potential for vertical slip due to inadequate bolt torque, as with wedge-style inserts).
- Allows for substantial vertical adjustment along full length of insert.
- Rebar interference not an issue
- Additional rebar hairpins not required to develop published working loads.
- Bold hardware is U.S. standard thread

Dimensions:

2" x 2" x 1/4" thick x length to suit with a 1/2" dia. x 3" stud

Finish:

- ☐ Hot-Dip Galvanized
☐ Stainless Steel Type 304
☐ Stainless Steel Type 316

Insert Length:

- ☐ 3"
☐ 4"

Length (3" minimum, 12' maximum) _____