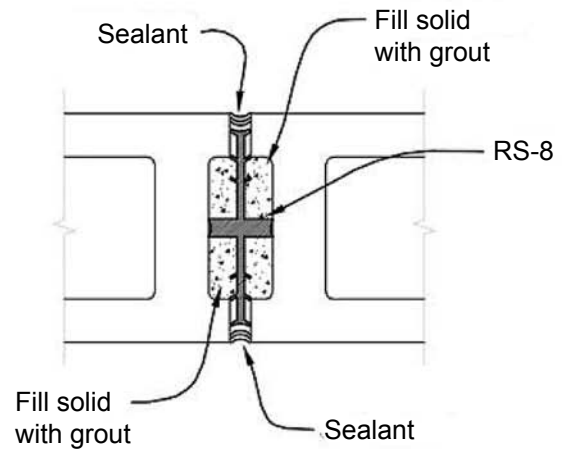
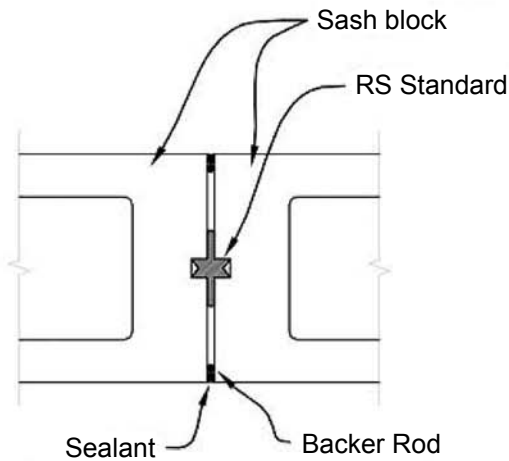
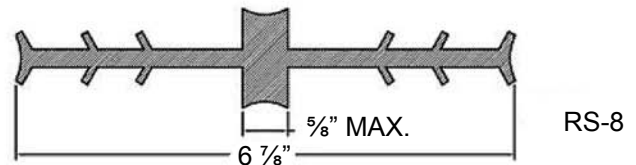
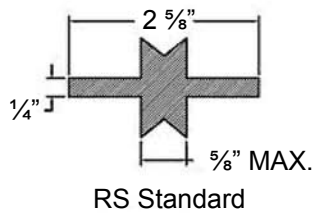
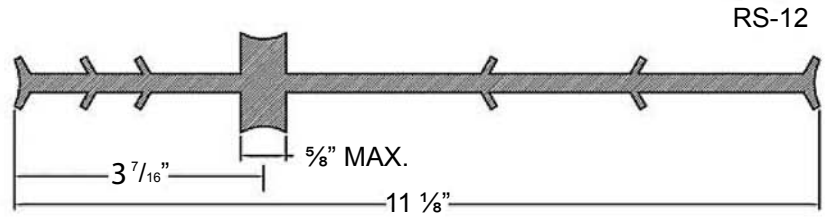
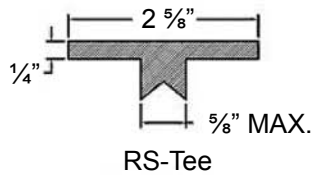


# Control Joints

## RS Series Rubber Control Joint



DRAWINGS FOR ILLUSTRATIVE PURPOSES ONLY

**Features:**

- Extruded rubber material designed for masonry walls at control joints
- Rubber material conforms to ASTM D 2000 2AA-805 (type rubber 654-06) with a durometer hardness of 80 (+ or - 5) when tested in conformance with ASTM D-2240
- Length per piece is 4 ft.
- RS Series rubber control joints are manufactured from 50% recycled material.

**RS Series:**

- RS Standard
- RS Tee
- RS-8
- RS-12